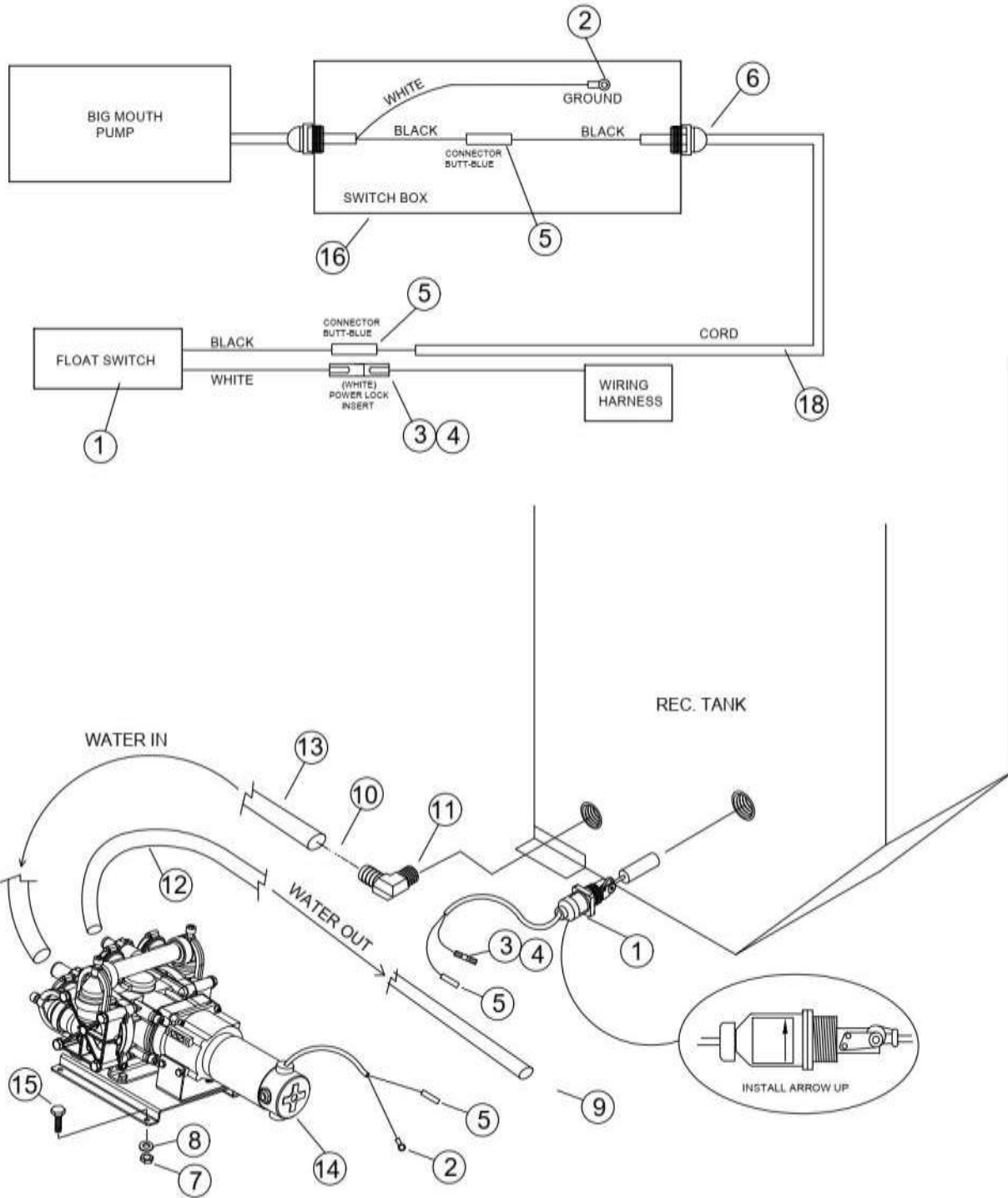


# TM EXTERNAL PUMP-OUT

## EXTERNAL PUMP-OUT WIRING



## TM EXTERNAL PUMP-OUT PARTS LIST

REF	PART NO.	DESCRIPTION	NOTES:
1	305-105	Switch, External C.A.D.	
2	325-205	Terminal Ring 1/4 Blue	
3	325-310	Power Lock Terminal - White	
4	325-320	Power Lock Insert	
5	325-005	Connector, Butt -Blue	
6	335-015	Strain Relief	
7	400-016	Nut, 3/8 Flanged	
8	415-130	FW, 3/8 Zinc	
9	425-007	Clamp, #10	
10	425-010	Clamp, #20	
11	555-335	Hose Barb 90, 1" Barb x 1" MPT	
12	572-156	Polyspring Hose 3/4"	
13	572-157	Polyspring Hose 1"	
14	520-030	Big Mouth Waste Pump	
15	405-110	Bolt , 3/8 x 1-1/4 Zinc	
16	305-940	Switch Box	
17	305-945	Switch Box Cover Blank	Not Shown
18	315-035	Cord	